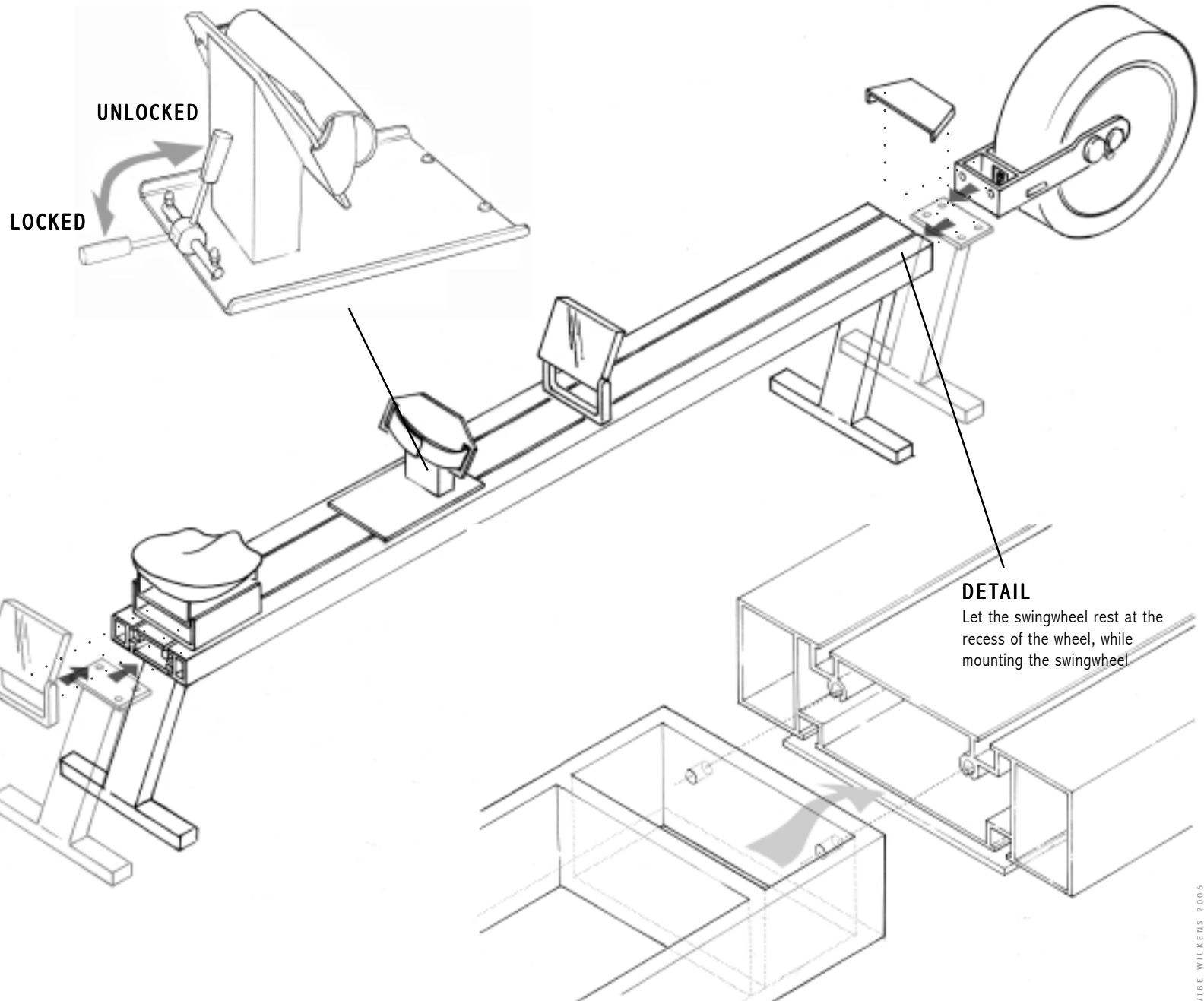


Assembly KAYAK

1. Turn profile upside-down, mount the front leg from the front side of the profile. Note that the front leg is positioned by a stopper - this is to help the mounting of the swing-wheel. Both legs are pointing backwards.
2. Mount back leg from the backside of the profile. Both legs are pointing backwards.
3. Turn around the profile, and mount swingwheel.
4. Mount the computer, a black line at the profile indicates position.
5. Mount footrest. Footrest position is easily adjusted when lever is in upright position. Footrest is locked when lever is in horizontal position.
6. Mount the seat. For tight mount, press down while tightening the screws.
7. Connect the computerwire to the plug in the swingwheel. Do not connect to AC/DC before all equipment is connected.
8. Mount the protection lid.
9. Connect wire to AC/DC. Always use the transformer included.
10. Fix all wires to the frame with strips.
NB: This is important in order not to damage wiring.



dansprint aps

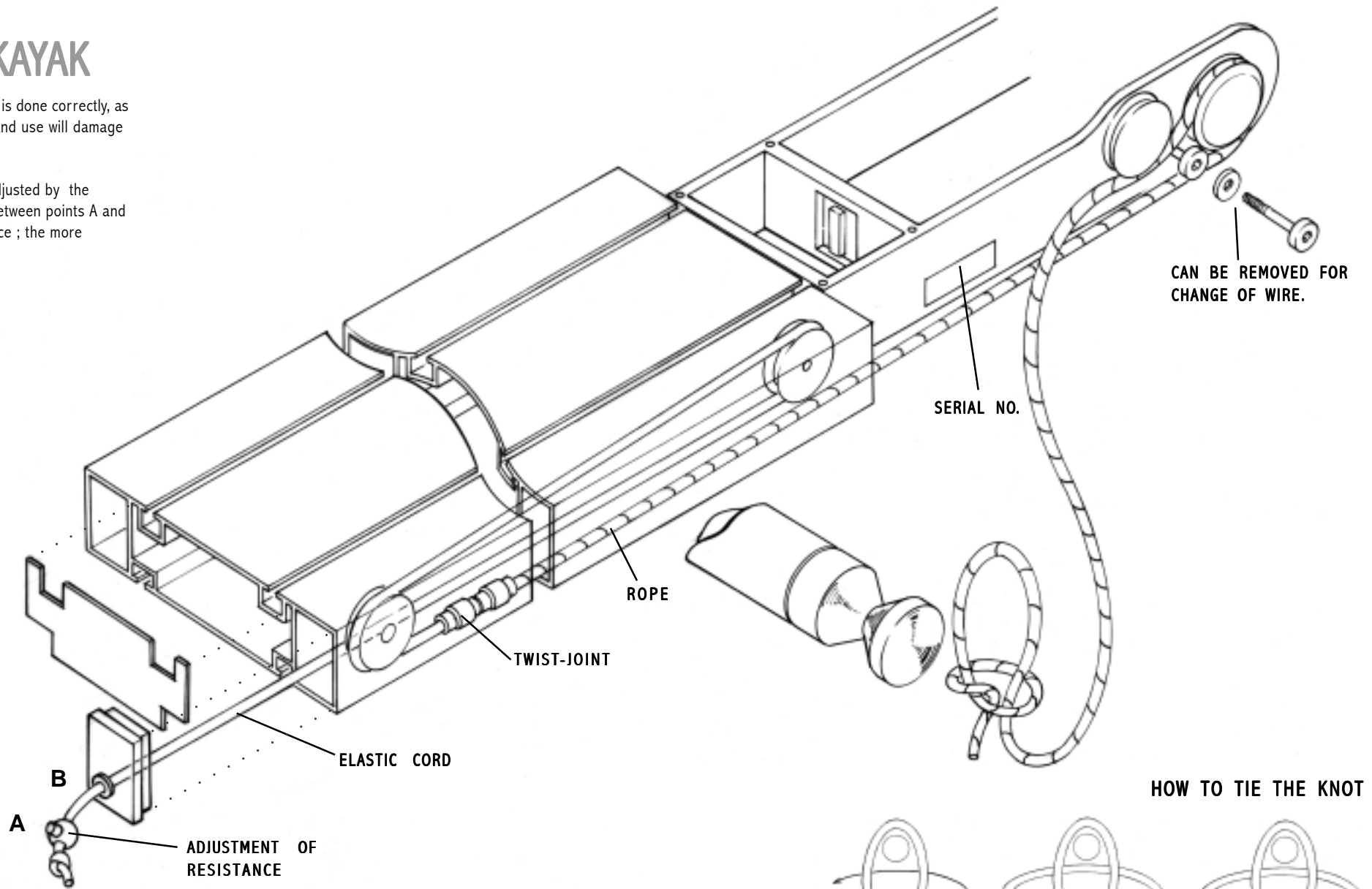
v/ Ole Torp

Strandmarksvej 27 C, 2760 Hvidovre, Danmark
tel +45 44 69 88 00 fax +45 44 69 88 80
www.dansprint.com ot@dansprint.com

Wiring KAYAK

Make sure the wiring is done correctly, as improper mounting and use will damage the material.

Resistance can be adjusted by the elastic cord length between points A and B; the longer distance; the more resistance.



Dansprint aps

v/ Ole Torp

Strandmarksvej 27 C, 2760 Hvidovre, Danmark
tel +45 44 69 88 00 fax +45 44 69 88 80
www.dansprint.com ot@dansprint.com



Contents **KAYAK**

The ergometer is delivered in **two** boxes, containing the following parts:

Box 1:

1 Frame, mounted with wiring and shaft.

Measures 12x25x240cm
Weighs 22 kgs

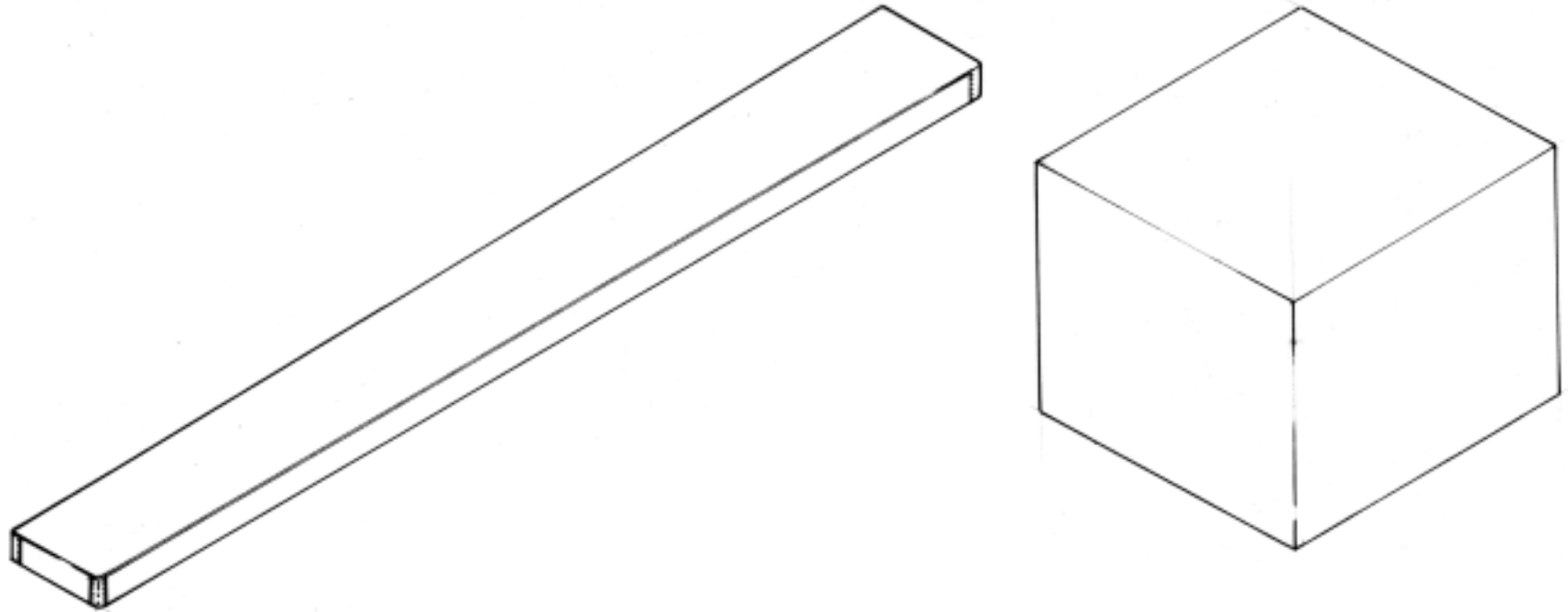
Box 2:

2 Legs
1 Swingwheel
1 seat
1 footrest

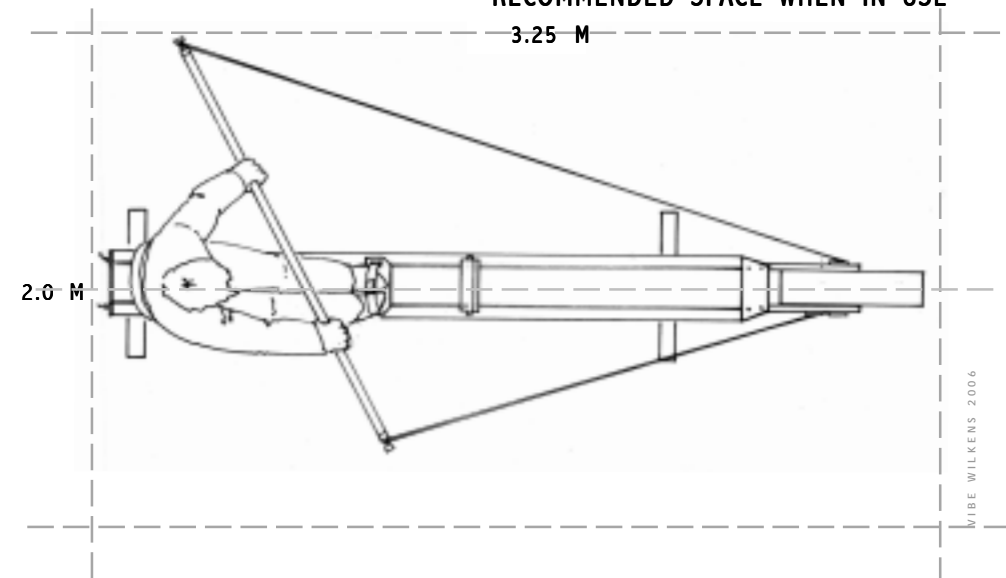
small box:

1 Computer
Wiring for computer
1 Power supply
1 Protection Lid
+ a little bag containing:
4 strips
Ekstra elastic cord
All tools needed for mounting
Users manual

Measures 70x78x50cm
Weighs 26 kgs.



RECOMMENDED SPACE WHEN IN USE



Dansprint aps

v/ Ole Torp

Strandmarksvej 27 C, 2760 Hvidovre, Danmark
tel +45 44 69 88 00 fax +45 44 69 88 80
www.dansprint.com ot@dansprint.com

Maintenance schedule

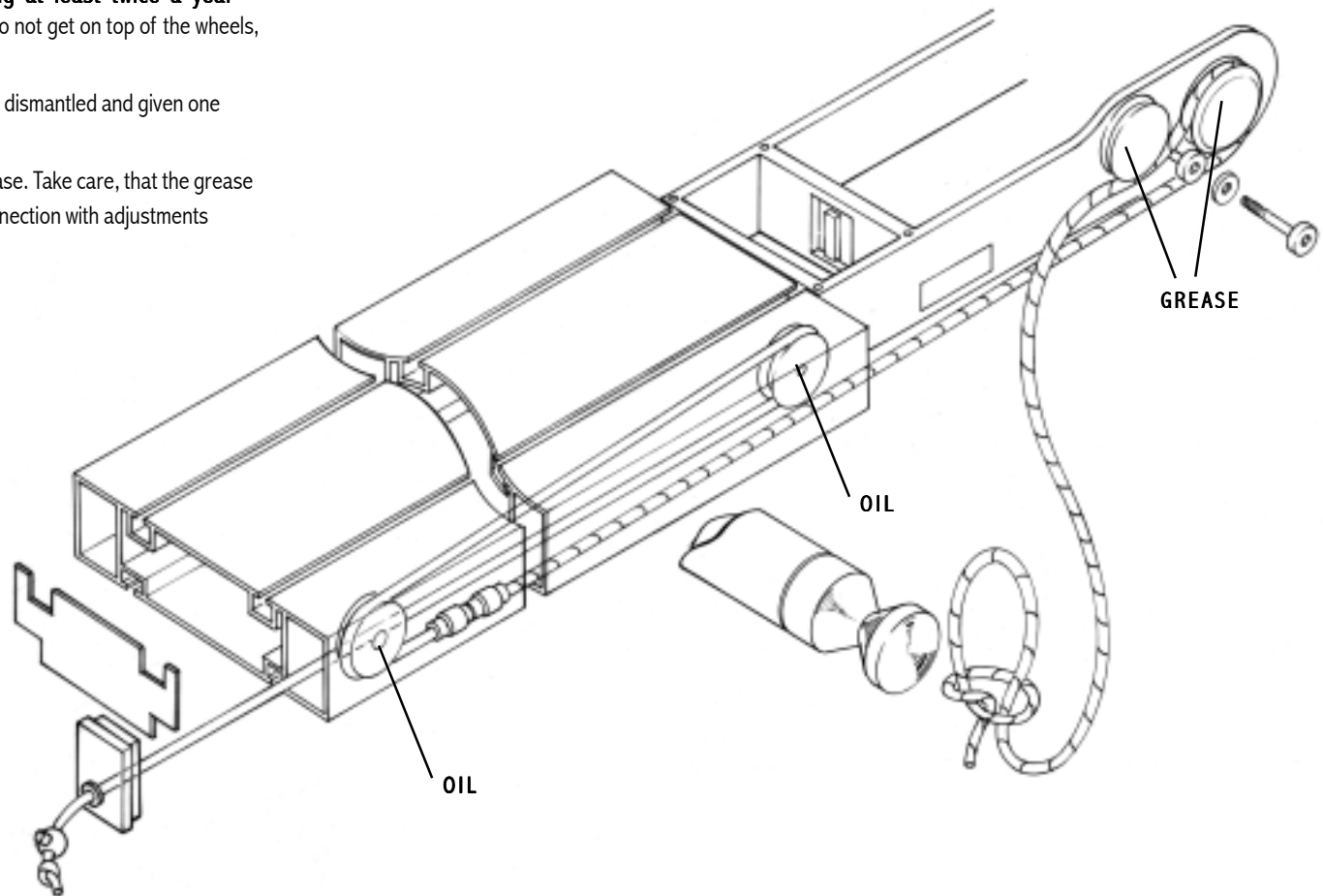
For unproblematic use of the Dansprint Kayak Ergometer follow this description:

Daily maintenance – things to do after training

- Dry off the ergometer from dirt and sweat
- Loosen the elastics in the back of the frame
- Turn off the power to the display

Besides this there are some moveable parts, which need lubricating at least twice a year

- 4 pulleys inside the frame need just one drip of oil. Take care, that the oil do not get on top of the wheels, but only on/into the bearings
- 2 artificial material steering wheels and 2 aluminium drag wheels need to be dismantled and given one brushstroke with bearing grease
- The handle to fasten the toe recess need one brushstroke with bearing grease. Take care, that the grease do not get on top of the handle, while the paddlers then get greasy hands in connection with adjustments



Dansprint aps

v/ Ole Torp

Strandmarksvej 27 C, 2760 Hvidovre, Danmark
tel +45 44 69 88 00 fax +45 44 69 88 80
www.dansprint.com ot@dansprint.com

Tastedefinitioner

De følgende tastedefinitioner er delt i tre hovedtilstande:

Menu-tilstand

Værdi-tilstand

Padle-tilstand

I Menu-tilstanden 'løber' brugeren gennem menuen.

I Værdi-tilstanden indtaster roeren bruger parametre som 'Paddlers Weight' eller 'Mean Balance Span'. I tilfælde af førstnævnte, er tastedefinitionerne som Værdi-tilstand A, der bruges til at vælge værdier frit i et fastlagt interval; i dette tilfælde fra 1 til 999 Kg. I tilfælde af sidstnævnte er tastedefinitionerne som tilstand B, hvor roeren vælger en af et begrænset antal fastlagte værdier.

I Padle-tilstand er det muligt at skifte mellem forskellige udlæsninger for to af de viste værdier: Øjeblikkelig hastighed/effekt og Sessionshastighed/effekt/vand%.

De følgende tastedefinitioner er gældende i de tre hovedtilstande:

Menu-tilstand:

Op, Ned: 'Løb' gennem menuen.

Venstre, Højre: Inaktiv.

Enter: Vælg menupunkt.

Reset: Nulstil session og gå til Padle-tilstand.

Værdi-tilstand:

A) Op, Ned: Øg eller nedsæt værdi.

Venstre, Højre: Ændr position.

Enter: Acceptér ny værdi.

Reset: Afvis ny værdi og gendan den gamle.

B) Op, Ned: Inaktiv

Venstre, Højre: Skift mellem værdier

Enter: Acceptér ny værdi.

Reset: Afvis ny værdi og gendan den gamle.

Padle-tilstand:

Op, Ned: Skift mellem forskellige udlæsninger af øjeblikkelig hastighed/effekt

Venstre, Højre: Skift mellem forskellige udlæsninger af sessionshastighed/effekt /vand%

Enter: Gå i Menu-tilstand.

Reset: Nulstil session.

Guidelines for the Dansprint kayak ergometer

Follow the instructions below to get the best paddle experience.

Before use

- Tighten the elastic cords equally and just enough to allow the rope to be pulled back before the next stroke – This is done in the back of the frame
- Apply power to the computer
- If necessary, adjust the computers contrast, by turning the stick in the backside of the computer
- Set the weight in the computer – press 'ç' to open the menu and 'RST' to exit the menu.
- Press the up and down arrow keys to select between speed units and power. Press the left and right arrow keys to select between water % (*), average and maximum value.
- Adjust the footrest to achieve a good paddling position and tighten the foot strap
- Adjust the fan resistance according to the table below.

Fan resistance 1 1-4 3-6 5-8 6-9 7-10

Weight [Kg] < 50 50 – 60 60 – 70 70 - 80 80 - 90 90 - 100

(*) The water %, shows you how long time you are in the water phase compared to the total stroke time.

After use

- Clean ergometer for dirt and sweat.
- Loosen the elastics in the back of the frame.
- Turn off the power to the computer.

Improve your training and technique

The PC software for the dansprint kayak ergometer presents the paddlers performance graphically. The stroke data and heart rate are displayed while paddling and saved for later analysing.

Use the stroke data to improve your training session and the comparison of the right and left stroke side to improve you paddle technique.

For more information about the PC software see www.dansprint.com under PC software or mail support@moebius.biz

For general information see www.dansprint.com

Dansprint ops

v/ Ole Torp

Strandmarksvej 27 C, 2760 Hvidovre, Danmark
tel +45 44 69 88 00 fax +45 44 69 88 80
www.dansprint.com ot@dansprint.com

Key definitions

The following key definitions are divided into three main modes:

Menu Mode

Value Mode

Paddling Mode

In Menu mode the user scrolls through menu points.

In Value mode the user sets up a user parameter such as Paddlers Weight or countdown. In case of the first, the key definitions are of value mode A, which is related to values that can be chosen arbitrarily within a predefined range; in this case 1 to 999 Kg.

In Paddling mode, it is possible to toggle the read-out for two of the displayed values: Instant speed/power and Session speed/power/water%.

The specific key definitions for the various modes are as follows:

Menu mode:

Up, Down: Scroll through menu points.

Left, Right: Inactive.

Enter: Select menu point.

Reset: Reset session and go.

Value mode:

A) Up, Down: Increase and decrease value.

Left, Right: Change position.

Enter: Accept new value.

Reset: Reject new value and reset to old.

Paddling mode:

Up, Down: Toggle readout for instant speed/power

Left, Right: Toggle readout for overall session speed/power/water%

Enter: Go to menu mode.

Reset: Reset/clear session and go.

dansprint aps

v/ Ole Torp

Strandmarksvej 27 C, 2760 Hvidovre, Danmark
tel +45 44 69 88 00 fax +45 44 69 88 80
www.dansprint.com ot@dansprint.com

Menu Tree

The menu is divided into two main parts: 1) New Session and 2) Data Presentation. It is not possible to enter the Data Presentation menu without having created data by paddling.

Menu 1

USER SETUP (Setting of user specified parameters)

PADDLERS WEIGHT (IMPORTANT! Specify your personal weight. Def. 73 Kg)

STOP WATCH (Set the stop watch to continue or stop when inactive)

COUNTDOWN

TIME (Set the time for countdown)

DISTANCE (Set the distance for countdown)

DISABLE (Stops the countdown function)

CALIBRATION (Drag resistance test)

RESET TO DEFAULTS (Reset to factory defaults)

SAVE CONFIG (Save session parameters for power-on values)

SESSION STATUS (List session parameters)

GO (Go to paddling mode)

Menu 2

CONTINUE (Return to paddling mode and append data)

GRAPHICS (Setting up and showing graph)

GRAPH TIME SPAN (Specify number of seconds from end of session to use for graph)

SHOW GRAPH (Show graph)

BACKUP (!)

NEW SESSION (Clear data and go to Menu 1 for setting up new parameters)

Note: At any time, pressing the Reset key will clear all data and start a new session using current parameters.

A full Users Manual is available at www.dansprint.com